

THE BEDFORD PARK FESTIVAL

11 to 26 June 2011

A fortnight of art, crafts, comedy, dance, fancy dress, film, food, football, fun, music, opera, poetry, photography and gardens

bedfordparkfestival.org



ST MICHAEL & ALL ANGELS CHURCH



The 45TH Bedford Park Festival

The Bedford Park Festival was set up in 1967 to foster a sense of community, celebrate the arts and raise money for urgent repairs to **St Michael & All Angels**. That first Festival helped save Bedford Park from destruction by developers. Forty five years on, the sense of community is stronger than ever and we continue our campaign to 'Make Every Day a Green Day' and help protect our environment.

The 2011 Festival will raise money for the work of **St Michael's**, including its arts and community projects; for **CEDARS**, helping disadvantaged children in and around Chiswick, cctg.co.uk/cedars; **USPG - Anglicans in World Mission**, uspg.org.uk and **The Upper Room**, feeding the community in need in West London, ur4jobs.co.uk.

The Festival – including its opening Green Days Fête – involves many local artists and musicians, professional and amateur, who are very generous with their time and talents. The venues are the Green, St Michael's Church and Parish Halls (with disabled access), the Tabard Theatre and private homes and gardens in Bedford Park.

There are events for all ages and interests. Reduced price tickets (*) are available for children, full-time students and the unemployed. We are grateful to our many generous local sponsors – businesses and individuals – who offer prizes or free meals, sponsor events or donate their services free or at cost price. They are named in local media and at bedfordparkfestival.org. To help in any way, please contact St Michael & All Angels Parish Office (020 8994 1380) or parishoffice@smaaa.org.uk.



Green Days Fête and Craft Fair

On Acton Green opposite Turnham Green tube station and St Michael & All Angels Church, Bath Road, W4



Our traditional village Green Days Fête has attractions for all the family, with dodgems, fairground rides and a bandstand – the focus for live music and many events.

Children can take part in, or watch: three junior 5-a-side football tournaments (U9s-U11s Saturday morning / U12s - U14s Saturday afternoon and U8s and below Sunday afternoon); Bedford Park's Got Talent (find out how to enter from the Parish Office or bedfordparkfestival.org) and the Fancy Dress Parade (theme: Children's film characters). And before then they can spot the children's film characters in the Turnham Green Terrace Treasure Hunt (under-12s, pick up an entry form from **Trotters**).

Activities on the Green include skittles, coconut shy and Children's Corner, and for the less active, a Champagne Lottery. The Craft Fair showcases a wide selection of skills, with works to buy or commission. Other stalls sell plants, cakes, toys, books, bric-a-brac, children's clothing and more.



Tickets will be on sale for the Win-a-Meal contest, High Roller Tombola and Raffle (supported by many local restaurants and businesses, named at bedfordparkfestival.org).

There's a beer tent serving Fuller's, Pimm's and cider; a refreshment tent serving lunches, strawberries and cream teas; a barbecue, with burgers and hot dogs from **Mackens**; bacon butties, crepes, Oriental and international food.

At the St Michael & All Angels stand, you can find information about the church, the Festival, Fairtrade and the charities; and buy Festival T-shirts, caps, mugs, aprons and other merchandise.

As part of our 'Make Every Day a Green Day' campaign, we aim to clear up and recycle waste on the Green and help the environment, supported by greentomatocars.com.



Saturday 11 June Stalls open 11am-6pm

Children's Fancy Dress Parade & Celebrity Opening ** 11am

Theme: Children's film characters. Meet in the Parish Hall at 10.30. A prize for every entrant



BJO 11.30am

Big sound modern jazz band, with hits from Duke Ellington to Woody Herman



Zumba 1.30pm

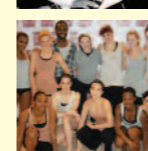
Back by popular demand, a demo of the hit dance fitness programme - and everyone is invited to join in.

Sponsored by the **Park Club**.



Hannah Faulkner 2pm

Singer/songwriter, guitarist, keyboard player, with songs from the 60s to today. myspace.com/hannahelizabethfaulkner



Creak 3pm

Classic, high-energy five-piece rock, blues and funk band. creak-the-band.com



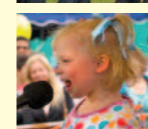
Quicksilver Dance 4.30pm – 4.45pm

Rambert's youth dance company: 10 dancers aged 15-24 perform new contemporary works. rambert.co.uk



Jessie Grace 5.15pm

"Smart song writing, a delectable voice and she's young and gorgeous" oxfordbands.com. facebook.com/JessieGraceMusic



Sunday 12 June Stalls open 11.30am-5.30pm

Mass on the Green 10.30am

Morning service in the open air, music by St Michael's Brass

World Busk for Musequality 11.45am for Noon start

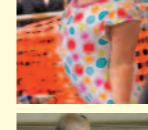
Calling musicians of all ages! Join in the world's biggest busk record attempt, raising money for children through music.

To sign up email jean@musequality.org



Root Juice 12.45pm

Chiswick-based jazz funk band plays classic covers and original compositions. myspace.com/rootjuiceband



ArtsEd 1.15pm

BA Hons Musical Theatre students perform numbers from hit 20th Century musicals.



Bedford Park's Got Talent 2-2.45pm & 3.15-4pm

Under-17s talent show. Entry forms from Parish Office and bedfordparkfestival.org NB places limited - must be booked in advance. Sponsored by **SweatyBetty**



The Pieces 5pm

Last year's Bedford Park's Got Talent winners - a Brit Pop/Rock band from Chiswick Community School. facebook.com/thepiecesofficial

Hold Up Nancy! 5.40pm

Young folk, pop and soul band with harmonies, guitar riffs and violin solos

** watch ChiswickW4.com for announcement

Friday 10 June – Friday 17 June

The Bedford Park Summer Exhibition

Preview Party: Be the first to see and buy works by local artists of all ages at a reception with wine and music. Raffle tickets on sale for the sculpture 'Ali Cat' by **Kit Line** until 17 June. All works are for sale and 30% of the proceeds go to the Festival causes.

NB: We cannot accept credit cards. Exhibition sponsored by **Savills**.

PREVIEW: Friday 10 June, 6.30pm-9pm. GENERAL OPENING: Saturday 11 June – Friday 17 June, 12 Noon-7pm daily, except Sunday 12 June 11.30am-6pm St Michael & All Angels Church. Admission free. Catalogue £1



FESTIVAL SUPPORTERS

A huge thank you to the many local firms who sponsor events and marquees; give their services free or at a discount; or donate meals for the Win-A-Meal Contest and prizes for the High Roller Tombola, Raffle and other events. We are particularly grateful to this year's major Festival sponsor, **Savills** (8987 5550) for supporting the Craft Fair, the Art Exhibition, Strictly Rambert and the Bedford Park Film Festival.

Our other Diamond sponsors, who have given £1,000 or more...

Discovery Networks (8811 3000): Green Days; **Eco-age.com** (8995 7611): Make Every Day a Green Day; **Edward D'Arc** (8996 5099): the 5-A-Side Football; **Fletchers** (8987 3000): the beer tent; **Hubbard Pegman & Whitney LLP** (8735 9770): the classical music concerts; **Marmalade Jewellery** (8742 1178): marmalade-making contest.



Our Gold sponsors, who have given £500 or more...

Andrew Nunn & Associates (8995 1500): Bedford Park Walk and Open Gardens; **Creation Video** (8987 9363): TV production; **Disney**: Children's events; **Hamptons** (8987 8444): St John Ambulance and Festival event; **Hartwood Property Management** (8994 8400): Face-painting, skittles etc; **MoveTo.co.uk**: Festival leaflet and ads; **Orion Publishing Group** (7240 3444): High Roller Tombola; **Tabard Theatre** (8995 6035): The Magic of Musicals and Comedy Night; **Wheelers** (8747 9505): flowers and arrangements.

Our Silver sponsors, who have given £250 or more...

Andreas Georgiou (8995 0140): refreshments; **Bedford Park Society**; **ChiswickW4.com**: Win-a-Meal; **Cafedirect**: Fairtrade refreshments; **Greentomatocars** (8568 0022): the Plant Stall; **Park Club** (8743 4321): Zumba and health stall; **SweatyBetty** (8747 6789): Bedford Park's Got Talent; **Trotters** (8742 1195): Children's Corner and Treasure Hunt; **Waterstones** (8995 3559): the literary events; **Whisk Cooking Solutions** (8995 8990): Cakes and International Food stalls.

We are also very grateful to **Jane Davies** (8747 4869) who designs this leaflet and **David Beresford** who takes the pictures.

DotWebDesign (8487 5631) provides website support. **Duval-Leroy** (8995 2008) supplies the champagne, **Fullers** (8996 2000) the beer tent and **Macken Brothers** (8994 2646) the meat for the Barbecue and Bacon Butties. **Independent Audio** (8384 4433) operates the sound system with power from **Inglewood Electrical** (07966 294272). **Snappy Snaps** (8994 0854) and **Vibeke Dahl Photography** (8876 8113) provide prizes for the Photographic Exhibition.



At the time of printing: a full, updated list of supporters, including donors to Win-a-Meal and the High Roller Tombola, is at www.bedfordparkfestival.org.

BOOKING INFORMATION: 020 8995 3285

Tickets for most events are available on the door, unless sold out. Some events require advance booking because places are limited. Prices marked with * are for children, students and the unemployed. **Advance Booking Forms** are available from the Parish Office, Priory Avenue, W4; the Church (porch and inside); and bedfordparkfestival.org. For Box Office information call Helen on 020 8995 3285 or email helen@may.be. **Save 10% if you buy any 10 tickets for Festival events in advance excludes Champagne Recital event and combined Tango Supper ticket.**

Saturday 11 June

Carolin Widmann: House Concert

An intimate concert in a beautiful Bedford Park house, followed by refreshments. International concert violinist **Carolin Widmann** performs J.S. Bach Partita in B minor BWV 1002; Lili Boulanger Nocturne; E. Ysaie Sonata No. 2 'Obsession'; Lili Boulanger Cortège; L. Berio Sequenza VIII. Accompanied by **Barry Jobling** (Piano). carolinwidmann.com. Sponsored by **Hubbard Pegman & Whitney LLP**.



8pm. 15 Priory Avenue. Tickets £12

Sunday 12 June



The Magic of Musicals

West End diva **Rosie Ashe** (the original 'Carlotta' in Phantom of the Opera, 'Felicia Gabriel' in The Witches of Eastwick and 'Madame Thenardier' in Les Miserables) presents songs from the world's greatest musicals. Accompanied by pianist **Jonathan Cohen** (Play Away, MusicTime). "From the opening number...the smile rarely leaves your face" *The Stage*.

7.30pm. Tabard Theatre. Tickets £12

Monday 13 June

Duo Nuevo: Inspired by Dance

Ruth Corney (Flute) and **Sam Cave** (Guitar/Composer) perform a virtuosic programme of dance-inspired music from around the world, from pavane to tango. ruthcorney.org, samcave.com. Sponsored by **Hubbard Pegman & Whitney LLP**.

7.30pm for 8pm. St Michael & All Angels Parish Hall. Tickets £12, £9*

Dudley Sutton: Old Enough To Know Better



Acute and personal political insights, vulgar verse and torrid prose from the misspent life of actor **Dudley Sutton** (Tinker in Lovejoy, Norman in Skins, Cockneys v Zombies). 'Genius...' his agent. 'Idiot...' his Dad. dudleysutton.com. Contains strong language, not suitable for children.

8pm. Tabard Theatre. Tickets £12

Wednesday 15 June

Strictly Rambert

Mark Baldwin, Artistic Director of Rambert Dance Company, talks about the world-famous company, based in Chiswick, and his own award-winning career as dancer and choreographer, in conversation with the BBC's **Torin Douglas**. With archive footage, questions from the audience and a chance to become a member of Rambert's Chiswick Friends. rambert.org.uk. Sponsored by **Savills**.



Mark Baldwin with Rambert dancers. Photo: Carl Fox

7.30pm for 8pm. St Michael & All Angels Parish Hall. Tickets £12, £9*

Thursday 16 June

Lunch Recital: Fauré, Finzi, Britten and Schumann

Alice Grattan (Soprano), **Steven Irwin** (Tenor) and **Cecily Lock** (Piano) perform songs by Gabriel Fauré; Gerald Finzi's settings of Thomas Hardy poems; Benjamin Britten's song cycle 'On This Island' and duets by Robert Schumann. Refreshments available. Bring a picnic to have afterwards in the garden.

1pm. The Studio, 2a Blenheim Road. Tickets £12, in advance only from Rosalind Leney 020 8994 0762

Punch and Judy: That's the way to do it!

After 350 years, Mr Punch is still fighting his nagging wife, the police, and a sausage-fixated crocodile. With puppets, **Alix Booth** presents an entertaining history of Punch and Judy, challenging the popular opinion that Punch is a sadist with a stick. Not suitable for children.

7.30pm for 8pm. St Michael & All Angels Parish Hall. Tickets £12, £9*



Friday 17 June

The Mikado



Opera Novella Productions presents Gilbert & Sullivan's much-loved operetta, featuring singers from the D'Oyly Carte and St Michael's very own **Father Kevin Morris** in the title role. With a live chamber orchestra, this comic and musical masterpiece includes all the favourites: A Wandering Minstrel, I've Got A Little List, Three Little Maids From School, and The Sun Whose

Rays. 'Sally-Ann Shepherdson's Yum-Yum was exemplary' *The Independent*. operanovella.com. Sponsored by **Douglas & Gordon**.

7pm for 7.30pm. St Michael & All Angels Church. Tickets £20, £10*

Friday 17 June – Sunday 19 June

Artists at Home 2011

67 artists and craft-workers in Chiswick, Hammersmith and Shepherd's Bush open their home-based studios. artistsathome.net
Fri 6pm-9pm, Sat & Sun 11am-6pm. Free

Saturday 18 June

Children's Book Festival

Readings and entertainment for young children by some of their favourite authors, with refreshments and activities. Details on posters.

10am. St Michael & All Angels Parish Hall. Donations welcome

Justin Lavender: Champagne Recital

Operatic and concert tenor **Justin Lavender** has sung leading roles at Covent Garden, La Scala and Sydney Opera House. He'll perform Schumann's Dichterliebe song cycle and opera arias. Hear Justin singing at justinlavender.co.uk. Champagne and canapés in a beautiful Bedford Park house and garden.

7.30pm for 8pm. 22 Woodstock Road. Tickets £30



Sunday 19 June

Parish Eucharist

10am. St Michael & All Angels Church. All welcome. Refreshment afterwards

Bach Cantata No 21 and Façade

Giles Ridley leads the **West London Players and Singers** with soloists **Alice Grattan** (Soprano) **Tom Cragg** (Tenor) and **Jim Wills** (Bass). Purcell Funeral Music for Queen Mary; JS Bach Cantata No. 21. **Façade**, an entertainment with poems by **Edith Sitwell** and music by **William Walton**, is played by a **Festival Consort of Instrumentalists and Reciters**. Sponsored by **Hubbard Pegman & Whitney LLP**.

7.30pm. St Michael & All Angels Church. Retiring collection

Monday 20 June

Tantalising Tango: The London Tango Quintet

Five of the UK's top musicians take us on an exhilarating journey through the sumptuous tango music of Astor Piazzolla. Brilliant accordionist **Milos Milivojevic**, violinist **David Juritz**, Grammy-nominated guitar virtuoso **Craig Ogden**, pianist extraordinaire **Paul Bateman** and outstanding bass player **Richard Pryce**.



Followed by Supper!

After the performance, supper is served in the Michael Room upstairs, where the entertainment will continue. Places limited, so book early.

7pm for 7.30pm. St Michael & All Angels Church. Tickets for concert £12, £9*. Tickets for concert and supper £25, £20*

Wednesday 22 June and Thursday 23 June

Art: Chiswick & Bedford Park School

Vibrant works of art from pupils aged 4 to 11. cbppschool.co.uk
Wed: 9.15-11.45am & 1-6pm; Thu: 11am-3pm. St Michael & All Angels Church.

Wednesday 22 June

Some Beautiful Morning: the Poetry of Daybreak

Bring a favourite 'morning' poem to read (max. 25 lines) - your own, or one by a well-known poet - or sit back and enjoy those of others. Special guest **Blake Morrison**, author of autobiography, fiction and poetry, will select poems that have moved and engaged him. Hosted by local poets **Anne-Marie Fyfe** & **Cahal Dallat**. Refreshments available.

7.30pm for 8pm. St Michael & All Angels Parish Hall. Tickets £7.50



Thursday 23 June

Lunch Recital: Schubert, Franck & Gershwin

Lana Trotovsek (Violin) and **Yoko Misumi** (Piano) are members of the award winning The Greenwich Trio. thegreenwichtrio.com. Refreshments available. Bring a picnic to have in the garden later.

1pm. The Studio, 2a Blenheim Road. Tickets £12, in advance only from Rosalind Leney 020 8994 0762

Friday 24 June – Sunday 26 June

Bedford Park Photographic Exhibition and Competition

For photographers of all ages - see website for entry details, including Royal Wedding Day entries. Raffle tickets on sale for a sitting and portrait by **Vibeke Dahl**. Sponsored by **Snappy Snaps**.



PREVIEW PARTY: Friday 6.30pm-8.30pm. Refreshments available. **GENERALOPENING: Saturday 10am-6pm, Sunday 11.30am-5.30pm**. **PRIZE GIVING: Sunday 5.30pm** (voting closes 5pm). St Michael & All Angels Parish Hall. Tickets £1, 50p*

Thursday 23 June

Corpus Christi Choral Mass and Procession

Vaughan Williams: Mass in G Minor; Bairstow: Let All Mortal Flesh Keep Silence

8pm. St Michael & All Angels Church. All welcome

Saturday 25 June

The Bedford Park Film Festival

From early Green Days to Nuns On The Run, Bedford Park is preserved forever on film. **Torin Douglas** presents some nostalgic and hilarious clips. Plus the winning films in the new **BPF Shorts** competition for 12-18s, judged by Chiswick Oscar-winner Colin Firth (entry details: bpfshorts.co.uk). With fish & chips in the interval. Sponsored by **Savills**.

7pm for 7.30pm. St Michael & All Angels Parish Hall. Tickets £15, £12*

Sunday 26 June

Festival Mass

Solemn Sung Eucharist: The **Bedford Park Festival Orchestra and Chorus**. Mozart: Waisenhausmesse. Conductor: **Jonathan Dods**.

10am. St Michael & All Angels Church. All welcome

Festival Mass Lunch

Lunch in the Vicarage Garden after Mass. From 12.30pm. Vicarage Garden. Tickets £7.50, £3*



Bedford Park Open Gardens

Visit around a dozen of the most beautiful private gardens in Bedford Park. Entry by ticket (and map) from St Michael's Parish Hall, where cream teas are on sale. Sponsored by **Andrew Nunn & Associates**. 2pm-6pm. St Michael & All Angels Parish Hall. Tickets £6, children free

The Bedford Park Walk

A tour of the key architectural and literary features of Bedford Park led by architect **John Scott** and lecturer **Dr Pamela Bickley**. Cream teas on sale afterwards. Sponsored by **Andrew Nunn & Associates**. 3pm-5pm. Meet 3pm in St Michael & All Angels Church. Tickets £7.50

Rosalind Leney's Pupils' Concert

Piano solos, 18th & 19th Century music and children's pieces. Refreshments available.

6pm. The Studio, 2a Blenheim Road. Tickets £5, in advance only from Rosalind Leney 020 8994 0762